

# **COLORATO**

[www.colorato.net](http://www.colorato.net)

## **INSTRUCTION MANUAL OF DRINK MIXER**



**MODEL: CLDM-400A**

Read carefully these instructions before using the appliance and save them for future reference

## **COLORATO recommends safety first**

We at COLORATO are very safety conscious. We design and manufacture consumer products with the safety of you, our valued customer foremost in mind. In addition, we ask that you exercise a degree of care when using any electrical appliance and adhere to the following precautions:

### **Important safeguards for your Drink mixer**

- ◆ Carefully read all instructions before operation and save for future reference.
- ◆ Remove any packaging material and promotional stickers before using the Drink mixer for the first time.
- ◆ Do not place the Drink mixer near the edge of a bench or table during operation. Ensure that surface is level, clean and free of water, flour etc. Vibration during operation may cause the appliance to move.
- ◆ Do not place this appliance on or near a hot gas or electric burner, or where it could touch a heated oven.
- ◆ Always ensure the Drink mixer is properly assembled before use.
- ◆ Do not leave the Drink mixer unattended when in use.
- ◆ Ensure that the switch in the control panel is in OFF position and then unplug from the power outlet before attaching the drink mixer or attempting to move the appliance, or when it is not in use and before cleaning and storing.
- ◆ Never place your fingers or utensils inside the Drink mixer cup without unplugging the unit from the power outlet.
- ◆ Keep hands and utensils out of the container while the motor is running, to prevent the possibility of severe personal injury and/ or damage to the drink mixer. A rubber scrapper may be used, only when the machine is not running.
- ◆ Do not remove Drink mixer's cup from its position whilst in operation. Remove the cup only when the appliance is completely off.
- ◆ To protect against electric shock do not immerse the base, the motor, the plug or the cord in water or any other liquid.
- ◆ Do not use the Drink mixer for anything other than mixing liquids.
- ◆ Make sure the motor and rod have completely stopped, the POWER switch is in OFF position and it is unplugged from the power outlet before disassembling.
- ◆ Keep the appliance clean.

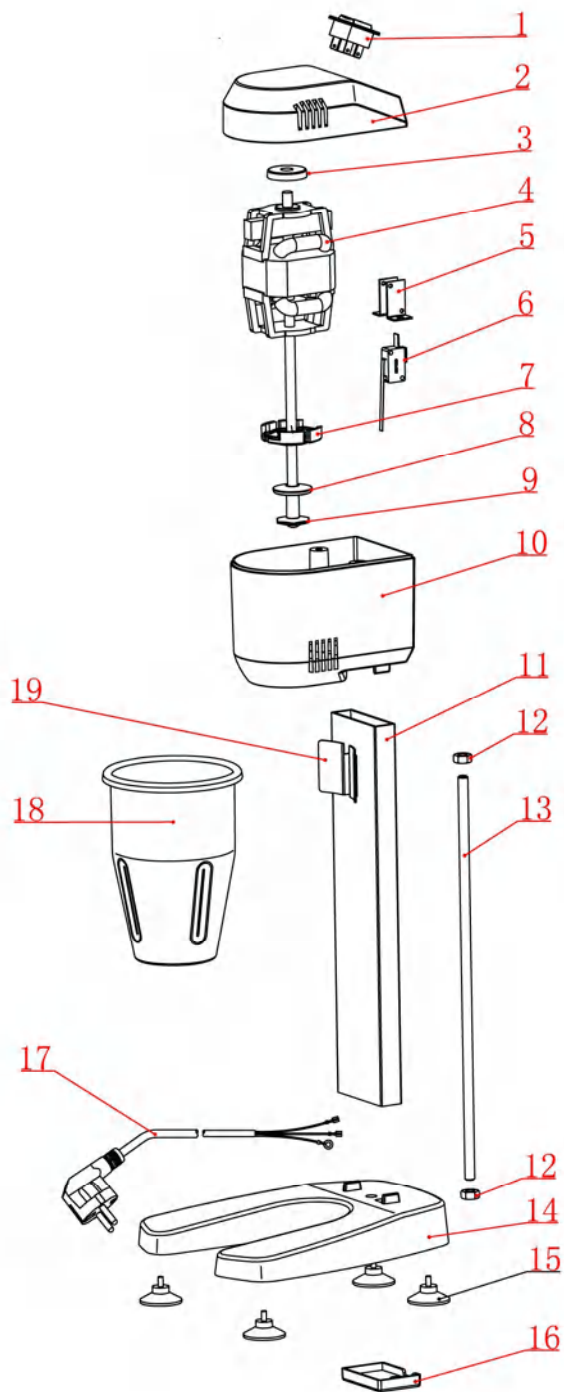
## Important safeguards for all electrical appliances

- ◆ Fully unwind the cord before use.
- ◆ To protect against electric shock, do not immerse cord, plug or motor base in water or any other liquid.
- ◆ Do not let the cord hang over the edge of a table or counter, touch hot surfaces or become knotted.
- ◆ This appliance is not intended for use by young children or infirm persons unless they have been adequately supervised by a responsible person to ensure they can use the appliance safely.
- ◆ Young children should be supervised to ensure that they do not play with the appliance.
- ◆ It is recommended to regularly inspect the appliance. Do not use the appliance if the power supply cord, plug or appliance becomes damaged in any way. Return the entire appliance to the nearest authorized COLORATO Service Centre for examination and / or repair.
- ◆ Any maintenance other than cleaning should be performed at a COLORATO authorized Service Centre.
- ◆ This appliance is for professional use. Do not use this appliance for anything other than its intended use. Do not use in moving vehicles or boats. Do not use outdoors.

## Technical parameters

Model	CLDM-400A
Voltage	220 V/ 50 Hz
Power	400 W
Rounds of Drink Mixer (r.p.m.)	Min 8000 – Max 16000
Capacity of the container	0,9L
Cord's length	1.5 m
Weight	3.63 kg
Dimensions	H 500 x W 230 x L 200 mm
Protector	Safety protector
Switch	2 speeds

## Exploded view of spare parts



Sequence No.	Part No.	Part Name (English Name)	(Quantity)
1.	LA*BRQ series	Switch	1
2.	DM-B-3002	Cover	1
3.	DM-A-1009	Rubber Cushion	1
4.	LA*7030	Motor	1
5.	DM-B-3101/3102	Microswitch Holder	1
6.	LA*DMC-series-F	Microswitch	1
7.	DM-A-1010	Rubber Cushion	1
8.	DM-A-1101	Upper Agitator	1
9.	DM-A-1102	Under Agitator	1
10.	DM-B-3001	Motor Housing	1
11.	DM-B-2001	Support	1
12.	LA*GB/T 6172.1 M8	Nut M8	2
13.	DM-B-2003	Screw	1
14.	DM-B-1001	Seat	1
15.	DM-A-1003	Underlay	4
16.	DM-B-1002	Power Cord Holder	1
17.	LA*DXE0201	Power Cord	1
18.	DM-B-2004	Cup	1
19.	DM-B-2002	Cup Holder	1

## **Brief introduction**

1. High industrial motor, special cup for better mixing.
2. ON/OFF switch, easily operated with two speeds.
3. Good quality and durable blades.
4. Stainless steel blend cup, saver and more beautiful.

**ATTENTION:** Never operate any appliance with a damaged cord or plug or after the appliance malfunctions or it is dropped or damaged in any cases. Call repair service or professional once for possible replacement, test and repair, electrical or mechanical adjustment.

## **Features**

- Strong and durable motor, high rotating speed, safe switch.
- Fine blend for powdered milk, sugar, pure milk, coffee etc.
- Quite helpful for commercial and domestic use.
- Switch: "I" is on, "O" is off.

## **ATTENTION**

1. Never put any metal things in the cup, such as: Knife, fork, spoon etc.
2. In order to prevent from danger, make sure that it is power off, before taking the cup for cleaning it.
3. Never use it for cutting something in pieces or blending some solid food that it is insoluble in water.
4. Make sure the container is safely connected and fixed with the machine before starting to work.
5. Hold the top cover slightly, when the appliance is starting to work, because of the high speed of the motor.
6. Be careful not to put materials above from the normal inside the cup, in order to prevent from overflowing.
7. When you need to pour out the materials, turn off the power and take off the cup when the motor has stopped running.
8. Always pay attention not to touch the switch carelessly before or after the machine works.

## **Operation Instructions**

### ➤ Milk

1. Add some materials: water, sugar and pure milk (powdered milk).
2. Put the blend cup on the bracket of the cup after putting all well prepared materials inside.
3. Connect the electric power and turn on the switch.
4. Wait for 5 minutes before turning the switch off.

**ATTENTION:** When putting the materials, add the correct capacity of water.

## **Maintenance**

1. When performing maintenance or cleaning, make sure that the outlet is unplug and the switch must stay at "OFF".
2. Clean the cup by sponge or cloth carefully and take it for airing.
3. Clean the motor base and bearing by dry cloth (NEVER clean by water). If it is difficult to wipe, do it after cleaning by neutral lotion.

## **Sphere of Application**

- A. Materials soluble in water.
- B. Some soft and small legume.

## **Troubleshooting**


When the appliance can't work, check:

1. If the outlet is unplugged
2. If the fuse or automatic switch is dropped off
3. If it is power off

If the problem continues, after you have checked all the above, send the appliance to the repair center. Don't try to repair it by yourself.

CE  ROHS



The symbol  on the product means that at the end of its life, the appliance has not to be considered a common waste. It is a special waste and has to be demolished in specific recovery and disposal area, as prescribed by the EC Directive 2002/96/EC (WEEE). By disposing this product correctly, you can avoid negative consequences for the environment and for the human health, due to the presence of potentially dangerous substances in the product.