

COLORATO

www.colorato.net

INSTRUCTION MANUAL COMMERCIAL TOASTER WITH 6 SLOTS



MODEL: CLT-625SS

Read carefully these instructions before using the appliance and
save them for future reference

IMPORTANT SAFEGUARDS

When using electrical appliances, basic safety precautions should always be taken, including the following:

1. Read all instructions.
2. Do not touch hot surfaces. Use handles or knobs.
3. To protect against risk of electrical hazards, do not immerse cord, plug, or any part of the commercial toaster in water or near liquid.
4. Close supervision is necessary when any appliance is used by or near children.
5. Unplug from outlet when not in use and before cleaning. Allow unit to cool before cleaning or handling.
6. Do not operate any appliance with a damaged cord or plug or after the appliance has been dropped or damaged in any way or if it is not operating properly. Return the toaster to the nearest authorized service facility for examination, repair, or adjustment.
7. The use of attachments not recommended or sold by the manufacturer may cause injury.
8. Do not use outdoors.
9. Do not let cord hang over edge of table or countertop, or touch hot surfaces.
10. Do not place on or near a hot gas or electric burner or in a heated oven.
11. Do not use this toaster for other than its intended use.
12. A FIRE MAY OCCUR IF THE TOASTER IS COVERED OR TOUCHING FLAMMABLE MATERIALS SUCH AS DRAPERIES OR WALLS WHEN IN OPERATION. DO NOT OPERATE UNDER WALL CABINETS.
13. Oversize foods, metal foil packages or utensils must not be inserted in a toaster as they may involve a risk of fire or electrical shock.
14. Do not attempt to dislodge food when toaster is plugged into electrical outlet.
15. To avoid possibility of fire, do not leave toaster unattended during use.
16. Put this list in a safe place- do not discard.
17. Do not store or use gasoline or other flammable vapours or liquids in the vicinity of this or any other appliances.

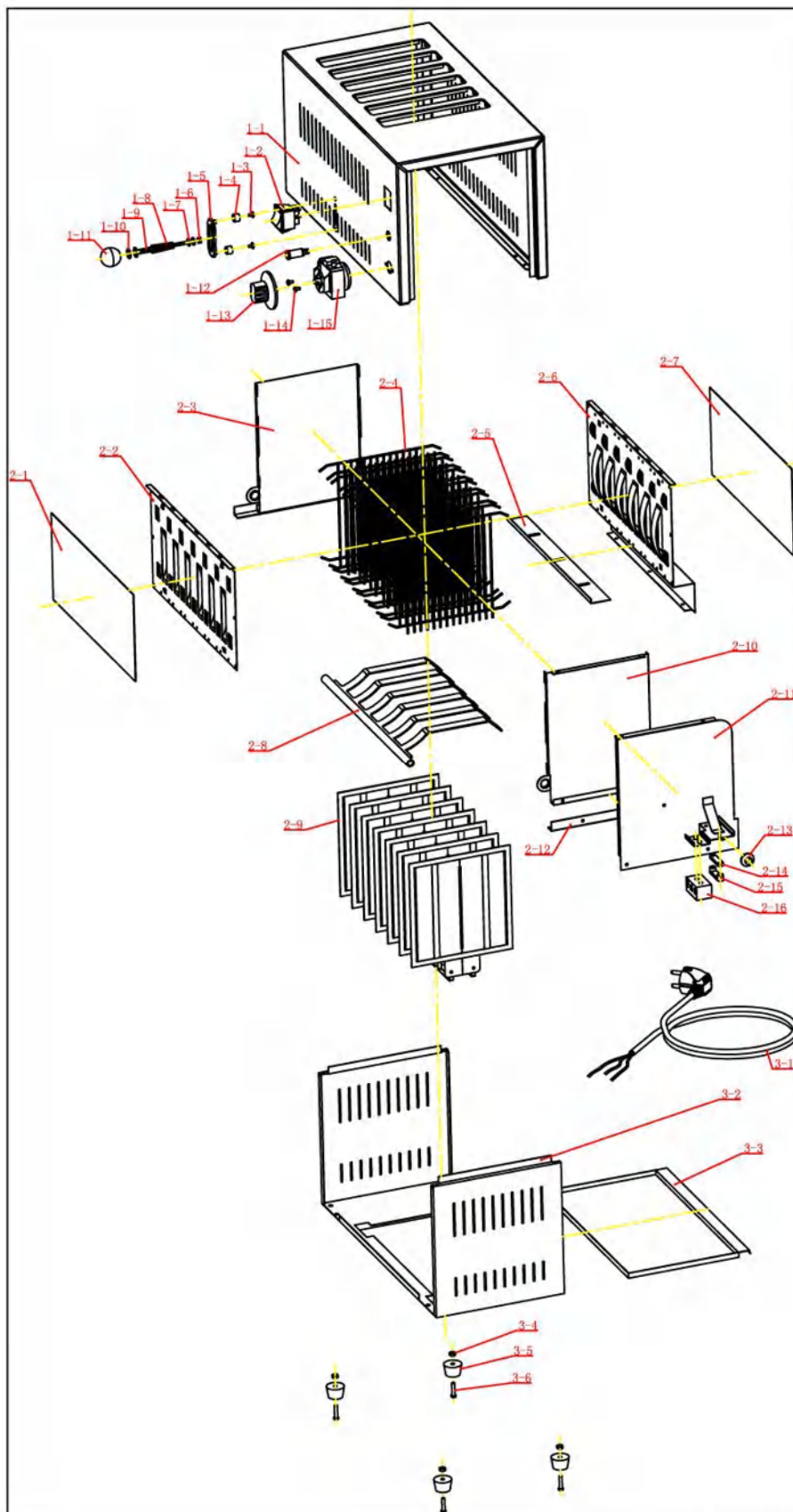
GROUNDING INSTRUCTIONS

For your protection, the toaster is supplied with a molded 3-prong grounding-type plug and should be used in combination with a properly grounding-type receptacle. Use of any other voltage or altering of the plug or cord may damage the unit, will void warranty and may cause injury.

TECHNICAL PARAMETERS

- Power: 2,94 KW
- 6 slots (6 pcs of toasts)
- Switch of 4 or 6 positions
- Rotary time switch of 5 minutes
- Stainless steel coating
- Stainless steel tray for easy cleaning
- Dimensions: 40,6 x 21 x 22,5 cm
- Weight: 7 Kg

EXPLODED VIEW OF SPARE PARTS



Sequence No	Part Name	Quantity
1-1	Top shell	1
1-2	Switch	1
1-3	Self screw	2
1-4	Bushing	2
1-5	Washer for pole	1
1-6	Nut	1
1-7	Washer	2
1-8	Spring	1
1-9	Dialing pole	1
1-10	Washer	2
1-11	Handle ball	1
1-12	Lamp	1
1-13	Knob for timer	1
1-14	Bolt with washer	2
1-15	Timer	1
2-1	Fore-insulating board	1
2-2	Fore-board for heater	1
2-3	Left-fixer for fork	1
2-4	Reseau	12
2-5	Block board for fork	1
2-6	Back-board for heater	1
2-7	Back-insulating board	1
2-8	Fork	1
2-9	Heater	7
2-10	Right-fixer for fork	1
2-11	Fixer for power	1
2-12	Beam	1
2-13	grommet	1
2-14	upper hold for cord	1
2-15	lower holder for cord	1
2-16	Pad	1
3-1	Power cord	1
3-2	Lower shell	1
3-3	Tray	1
3-4	Nut	4
3-5	Foot	4
3-6	Bolt	4

OPERATION

1. Put toaster on counter or flat, dry surface near electrical outlet.
2. Place breads in the slots, set the browning time and put down the carriage levers.
3. You can select to cook 2 or 4 or 6 breads at the same time.


CAUTION: The removable crumb tray must be completely inserted before operating the toaster. If the tray is removed for cleaning, ensure that it is replaced before using the toaster. Crumb tray is dishwasher safe.

CARE AND CLEANING

Let toaster cool before any cleaning operation.

1. To clean outer surface: let toaster cool. Unplug power cord. Wipe down exterior with damp cloth. Prevent liquid from running into toaster slots. Before using, allow toasters' outer surface to dry.
2. To clean crumb tray: remove the crumb tray and discard crumbs. Wipe crumb tray clean and replace in toaster. Never operate the toaster without the crumb tray in place. Crumb tray is dishwasher safe.
3. To remove any pieces of bread remaining in the toaster, unplug toaster, turn the toaster upside down and gently shake. Never insert any metal or sharp instrument into the toaster slots. This could damage the toaster and present a potential safety hazard.

CE  ROHS

The symbol  on the product means that at the end of its life, the appliance has not to be considered a common waste. It is a special waste and has to be demolished in specific recovery and disposal area, as prescribed by the EC Directive 2002/96/EC (WEEE). By disposing this product correctly, you can avoid negative consequences for the environment and for the human health, due to the presence of potentially dangerous substances in the product.